



MOTION PRO, INC.
3171 Swetzer Road
Loomis, CA 95650
Tel 650.594.9600
www.motionpro.com

SOTER FUELING SYSTEM™

Quick Start Guide | Motion Pro Soter Fueling System™

The Motion Pro Soter Fueling System requires correct installation of the components for safe use and function. This quick start guide will identify the steps needed for installation and use of the system. For more information about installing or servicing the Soter Fueling System please see the full documentation provided with each component.

REQUIRED ITEMS:

Bar tool (scrench)



08-0661 Soter Fueling System receiver
or
08-0719 Soter Fueling System receiver



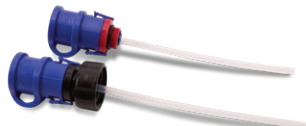
Portable fuel container
**not included*



Aluminum fuel bottle
30oz or less **not included*



08-0662 Probe Assembly, for Aluminum fuel bottle 30oz or less
08-0680 Probe Assembly, for fuel combo can



IMPORTANT BEFORE STARTING INSTALLATION:

SEE REVERSE SIDE TO REVIEW ALL CONTENT AND SAFETY RISKS ASSOCIATED WITH INSTALLING AND USING THE SOTER FUELING SYSTEM

Visit motionpro.com/c/soter-fueling-system for more information

OR SCAN QR CODE FOR SOTER FUELING SYSTEM™ RESOURCES



Note: Most smartphone cameras will scan qr codes

Access additional instructional documents and videos



COMPATIBILITY:

Fuel Container:

Scepter™ SmartControl Gasoline Cans

Chainsaw: For Stihl® Models

Motion Pro Soter Fueling System™ 08-0661 Receiver replaces Stihl® # 000-050-0533

Fits following models: STIHL® MS193, MS250, MS251, MS271, MS280, MS362, MS441C, MS460, MS461

Getting Started:

Remove blue Probe Cover with the child safety locking feature



1. To remove, first engage the two side tabs as shown
2. While holding the side tabs, rotate the cap until you feel the tabs drop into their removal slots. This is visually indicated by the alignment of the indicator marks on the dust cap and probe. The dust cap can now be pulled from the probe

Note: when installing the dust cover it's not necessary to align the child safety tabs, simply push the dust cover down fully until it clicks

▲ IMPORTANT: DO NOT TRY AND REMOVE CAP WITH FORCE! THE BLUE PROBE DUST COVER FEATURES A CHILD SAFETY LOCK SYSTEM

Step 1: Install Soter Fueling System Probe



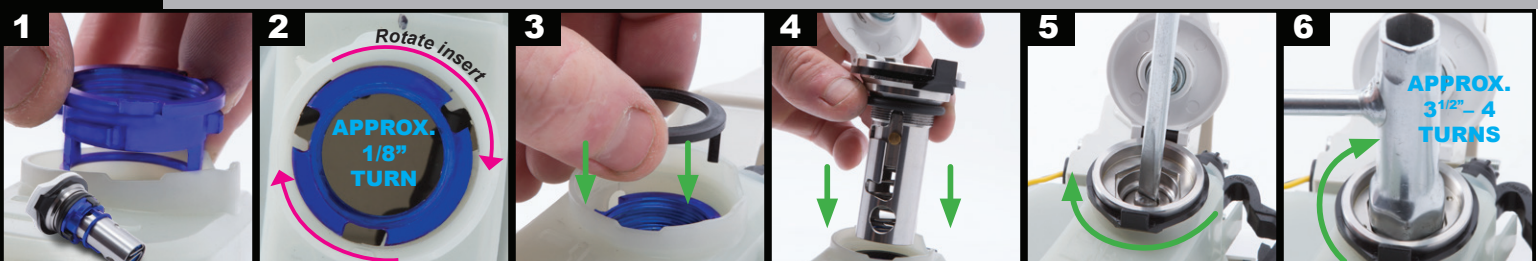
1. Install 08-0662 Probe onto 30oz Fuel Container. Be sure to align and install the Probe vertical to eliminate cross-threading the component

IMPORTANT: DO NOT MISALIGN OR CROSS-THREAD PROBE DURING INSTALLATION. DAMAGE OR INJURY MAY OCCUR IF THE COMPONENT IS NOT FULLY INSTALLED

2. With the Probe component aligned and threaded correctly. Ensure the Probe is tightened securely and the lower o-ring is compressed

Repeat steps to install the 08-0680 Soter Fueling System Probe. IMPORTANT: DO NOT MISALIGN OR CROSS-THREAD PROBE DURING INSTALLATION. DAMAGE OR INJURY MAY OCCUR IF THE COMPONENT IS NOT FULLY INSTALLED

Step 2: Install Soter Fueling System 08-0661 Receiver



1. Remove blue lower adaptor and black locking ring from the 08-0661 receiver assembly. Insert the lower adaptor into the neck of the fuel tank, taking care to properly align its three cogs with corresponding features in fuel tank

2. With the lower adaptor in place, rotate clockwise until it stops (approximately 1/8 turn). The three openings for the locking ring will now be exposed

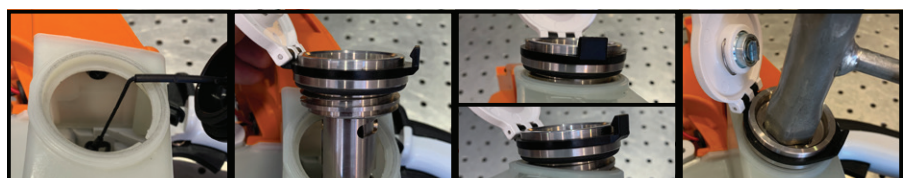
3. Lower the black locking ring into the three corresponding features in the blue lower adaptor. Ensure that it seats fully in place

4. With the blue adaptor and black locking ring in place, lower the 08-0661 Receiver assembly, with o-ring and dust cover installed, into the fuel tank opening

5-6. Ensure proper thread alignment and gently hand fasten the 08-0661 Receiver into place. Carefully fasten the receiver clockwise using the screwdriver end of the bar tool in the receiver plunger slot. To fasten completely, engage the large hex end of the bar tool into the hex opening in the receiver. Complete fastening is typically achieved in 3.5-4 turns total

Step 2: 08-0719 Receiver Installation:

1. Remove stock cap and clean sealing surface of fuel tank
2. Insert SFS receiver into tank, ensure proper alignment of the threads
3. DO NOT CROSS-THREAD
4. Fasten using the large hex end of the bar tool



installation continued on reverse page...

See reverse side for more information and warnings when installing the Soter Fuel System components

Step 3: 08-0661 Receiver locking and unlocking procedures



1. The dust cover on the receiver protects from impact and debris, but additionally includes an integrated locking mechanism for the receiver. Rotate clockwise to lock and counterclockwise to unlock receiver

2. Alignment indicators and plunger slot shown in alignment. This signifies that the receiver is locked and cannot be used for an SFS fuel transfer until it is returned to the unlock position

Alignment indicators are located on the interior of the receiver. The plunger (center) slot is NOT aligned with the indicator marks, signifying that the receiver is unlocked and ready for fuel transfer using an SFS probe

When a SFS probe is not available for use, the receiver plunger can be locked in the open position to allow traditional refueling. **WARNING: DO NOT TOUCH, DEPRESS, OR ATTEMPT TO OPEN PLUNGER WHEN RECEIVER IS IN THE UNLOCKED POSITION UNLESS LOCATED MINIMUM 100 FEET FROM IGNITION SOURCE, AND FUEL IN THE FUEL TANK IS NOT IN A GEYSERING STATE.** To lock open, slowly and carefully push down unlocked plunger with the bar tool. When the plunger bottoms out, rotate clockwise approximately 1/4 turn. After traditional refueling, rotate the plunger counter-clockwise approximately 1/4 turn and allow plunger to release to the closed position under spring pressure

Step 4: Fuel Transfer with the Soter Fueling System™ Probe installed



1. To refuel with Soter Fueling System, unlock receiver and open/remove dust covers from both probe and receiver. **WARNING: PROBE AND RECEIVER MUST BE FREE OF DEBRIS BEFORE FUEL TRANSFER. ALWAYS CLEAN RECEIVER IN LOCKED POSITION.** Invert fuel container and place probe in first step of receiver, maintaining axial alignment



2. Firmly and completely push probe into receiver while maintaining axial alignment. Complete fill of Stihl MS461 fuel tank is achieved in approximately 20 seconds. After refueling, remove probe from receiver and return dust covers to their closed position. Receiver may be locked, but is not required for operation



IMPORTANT: DO NOT MISALIGN OR CROSS-THREAD PROBE DURING INSTALLATION. DAMAGE OR INJURY MAY OCCUR IF THE COMPONENT IS NOT FULLY INSTALLED

Motion Pro Soter Fueling System™ Removal Instructions

PORTABLE FUEL CONTAINER

IMPORTANT: Read and follow all manufacturer's instructions and warnings on use, storage, and regular inspection of portable fuel container. Never fill portable fuel containers above the recommended maximum level. Failure to read and follow instructions for use of portable fuel containers could result in great bodily injury or death

SOTER FUELING SYSTEM™ PROBE (08-0662/08-0680) REMOVAL

IMPORTANT: Please carefully read all instructions for the installation and use of the SFS Probe before installing or using. Improper installation or use of this product could result in property damage, fire, severe burns, harm to others, great bodily injury or death. Do not attempt to open SFS Probe manually when installed on a portable fuel container. Doing so could result in geysering (spraying out) of gasoline and could result in property damage, fire, severe burns, harm to others, great bodily injury or death. Wear safety glasses when using and installing this product.

WARNING: To avoid injury, you must follow these procedures to remove SFS Probe from portable fuel container. If the fuel bottle is completely empty then it is ok to remove the probe:

1. Take portable fuel container with SFS Probe to safe place at least 100 feet from nearest fire, sparks, or other source of ignition.
2. Put on safety glasses.
3. Turn probe body counterclockwise slowly but no more than one full turn and check for fuel leakage from around threads. If fuel is leaking out around threads this indicates that fuel container has pressure and Probe cannot be removed safely. Turn body clockwise to fully seat SFS Probe body back onto portable fuel container. Allow portable fuel container to sit longer and cool down. Repeat until no fuel leaks from threads when body is unscrewed one full turn.
4. If no fuel leaks out from around threads when SFS Probe is unscrewed one full turn from the fully seated position, then it is safe to unscrew SFS Probe the rest of the way and remove from portable fuel container.
5. Install stock cap on portable fuel container to prevent fuel spills.

SOTER FUELING SYSTEM™ RECEIVER (08-0661/08-0719) REMOVAL

IMPORTANT: Please carefully read all instructions for the installation and use of the SFS Receiver before installing or using. Improper installation or use of this product could result in property damage, harm to others, great bodily injury or death. Do not depress plunger on an SFS Receiver installed on a gas tank without use of SFS Probe. Doing so could result in geysering (spraying out) of gasoline and could result in property damage, fire, severe burns, harm to others, great bodily injury or death. Wear safety glasses at all times when using, installing, or removing this product. the fuel tank must be empty before starting this process!

WARNING: To avoid injury, you must follow these procedures to remove SFS receiver from equipment gas tank:

1. Allow the equipment to sit for 45 minutes away from heat sources to allow the equipment to cool.
2. Take equipment to safe place at least 100 feet from nearest fire, sparks, or other source of ignition.
3. Put on safety glasses
4. Install SFS Probe in good working condition on portable fuel container and insert into SFS Receiver and hold down for 15 seconds to bleed pressure out of equipment fuel tank.
5. Confirm pressure has been relieved in equipment gas tank as follows: With dust cap on, unlock SFS receiver. Open dust cap. Use screwdriver blade to slowly and gently depress plunger in SFS Receiver a small amount (no more than 2 mm). If fuel comes out withdraw the screwdriver blade and allow receiver to close. Let equipment cool down for longer period of time and try bleeding pressure from gas tank again by inserting SFS Probe attached to portable fuel container. Repeat this process until no fuel comes out of SFS Receiver when plunger is depressed a small amount. Warning: Never push down receiver fully without SFS Probe!
6. If SFS Receiver plunger can be depressed a small amount without fuel coming out then it is safe to proceed with removal of the SFS Receiver by using a bar tool or appropriate size hex wrench that fits on inside of SFS Receiver to turn it counter clockwise and unscrew from the Receiver adaptor in the fuel tank.
7. Move to step 8 for 08-0719 receiver. For 08-0661 receiver, remove locking ring from SFS Receiver tank adapter and remove tank adapter by turning it counter clockwise to align tabs on adapter with slots on gas tank.
8. Install stock gas cap on equipment gas tank to prevent fuel spills.

*Stihl® is a registered Trademark belonging to Andreas Stihl AG & Company KG and is not affiliated in any way with Motion Pro, Inc.