



User Manual For Soter Fueling System™ 08-0680 Probe

motionpro.com/c/soter-fueling-system

Motion Pro Soter Fueling System™

The Motion Pro Soter Fueling System™ requires correct installation of the components for safe use and function. This manual will identify the steps needed for installation and use of the system. For more information about installing or servicing the Soter Fueling System™ please see the full manual provided with each component.

IMPORTANT: THE SOTER FUELING SYSTEM PROBE IS INTENDED FOR REFUELING equipment outfitted with the Motion Pro Soter Fueling System™ Receiver only. NOT INTENDED FOR REFUELING ON-ROAD MOTOR VEHICLES

08-0680 Manufacture Date

Date:

EO: G-22-001

COMPATIBILITY:

Fuel Container (Make, Model, Size):

Scepter™, SmartControl Model #FR1G101, 1 gallon
Scepter™, SmartControl Model #FR1G201, 2 gallon
Scepter™, SmartControl Model #FR1G501, 5 gallon

SFS Receivers:

- 08-0661 (¼ turn cap Stihl® saws)
- 08-0719 (Stihl® MS660)
- 08-0718 (Husqvarna® Chain saws)

RESOURCES:

Access documents and video resources online:

Use smartphone camera to scan



for more information visit:
motionpro.com/c/soter-fueling-system

SFS PROBES:

08-0680 SFS Probe



Portable fuel container
*not included

Scepter:
FR1G101 (1 gallon)
FR1G201 (2 gallon)
FR1G501 (5 gallon)



08-0662 SFS Probe

*not included



MSR® Style 30 oz.
fuel bottle
*not included

08-0738 SFS Probe

*not included



2-Stroke PreMix cans
32 oz. or 1 gallon style
*not included

SERVICE TOOLS:

Bar tool (scrench)
*not included



08-0713 Soter Probe
Service tool *not included



STEP 1: 08-0680 Probe Installation

NOTE: Above listed compatible container equipped with SFS 08-0680 Probe complies with CARB emission regulations for portable fuel containers (13 CCR 2467 et seq.)

1. Install 08-0680 Probe onto the portable fuel container. Be sure to align and install the Probe vertically to prevent cross-threading the component.

IMPORTANT: Do not misalign or cross-thread probe during installation. DAMAGE OR INJURY MAY OCCUR IF THE COMPONENT IS NOT FULLY INSTALLED.

2. With the Probe component aligned and threaded correctly, ensure the Probe is tightened securely and the lower o-ring is compressed. Probe will lock in place when the ratchet system engages. For Probe removal, depress green tab. Install dust cover when not in-use.

WARNING: DO NOT REMOVE FLAME MITIGATION DEVICE IN THE PORTABLE FUEL CONTAINER. Shorten the SFS Probe air tube if necessary for proper fitment during installation.

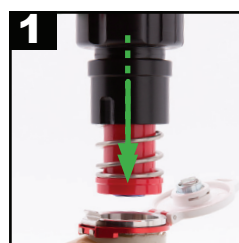


STEP 2: 08-0680 Probe Fuel Transfer

1. To refuel with Soter Fueling System™, unlock Receiver and open/remove dust covers from both Probe and Receiver. Invert fuel container and place Probe in first step of Receiver, maintaining axial alignment.

2. Firmly and completely push Probe into receiver while maintaining axial alignment. Complete fill will be achieved in 20 seconds or less on most chainsaws. After refueling, remove probe from Receiver and close the receiver dust cover. Receiver may be locked, but is not required for operation.

3. Refer to the manual provided with SFS Receiver for instructions on how-to install, use, and service Receiver component.



STEP 3: 08-0680 Probe Removal

For Portable Fuel Container

IMPORTANT: Read and follow all manufacturer's instructions and warnings on use, storage, and regular inspection of portable fuel container. Never fill portable fuel containers above the recommended maximum level. Failure to read and follow instructions for use of portable fuel containers could result in great bodily injury or death.

IMPORTANT: Please carefully read all instructions for the installation and use of the SFS Probe before installing or using. Improper installation or use of this product could result in property damage, fire, severe burns, harm to others, great bodily injury or death. Do not attempt to open SFS Probe manually when installed on a portable fuel container. Doing so could result in geysering (spraying out) of gasoline and could result in property damage, fire, severe burns, harm to others, great bodily injury or death. Wear safety glasses when using and installing this product.

WARNING: To avoid injury, you must follow these procedures to remove SFS Probe from portable fuel container.

1. Take portable fuel container with SFS Probe to safe place at least 100 feet from nearest fire, sparks, or other source of ignition.
2. Put on safety glasses and protective gloves.
3. Probe will be secured in place by the ratchet system on the Scepter® portable fuel containers. For removal, depress green tab, then turn probe body counterclockwise slowly but no more than one full turn and check for fuel leakage from around threads. If fuel is leaking out around threads this indicates that fuel container has pressure and Probe cannot be removed safely. Turn body clockwise to fully seat SFS Probe body back onto portable fuel container. Allow portable fuel container to sit longer and cool down. Repeat until no fuel leaks from threads when body is unscrewed one full turn.
4. If no fuel leaks out from around threads when SFS Probe is unscrewed one full turn from the fully seated position, then it is safe to unscrew SFS Probe the rest of the way and remove from portable fuel container.
5. Install stock cap on portable fuel container to prevent fuel spills.

SERVICE: Soter Fueling System™ 08-0680 Probe

WARNING: Read all direction for servicing; improper installation could result in gasoline spill, property damage, great bodily injury or death; improper use could result in great bodily injury or death.

WARNING: When servicing these components, stay away from open flame or sparks and protect skin from gasoline and other chemicals. Wear safety glasses. Test function before putting system back in service.

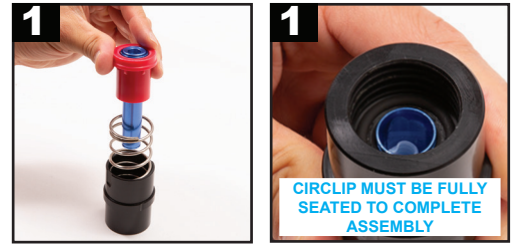
08-0680 Probe Service Disassembly

1. Remove Probe air tube by turning the tube counterclockwise to unscrew it from the air tube fitting. Carefully remove the circlip using external circlip pliers, simultaneously holding the adaptor securely to prevent the spring from ejecting the adaptor from the Probe.
2. Separate the adaptor from the Probe. The spring, outer collar, slip ring, and seal ring may now be removed from the assembly. Clean all parts using contact or brake cleaner and compressed air. Carefully inspect all components for wear or damage, and replace if necessary.

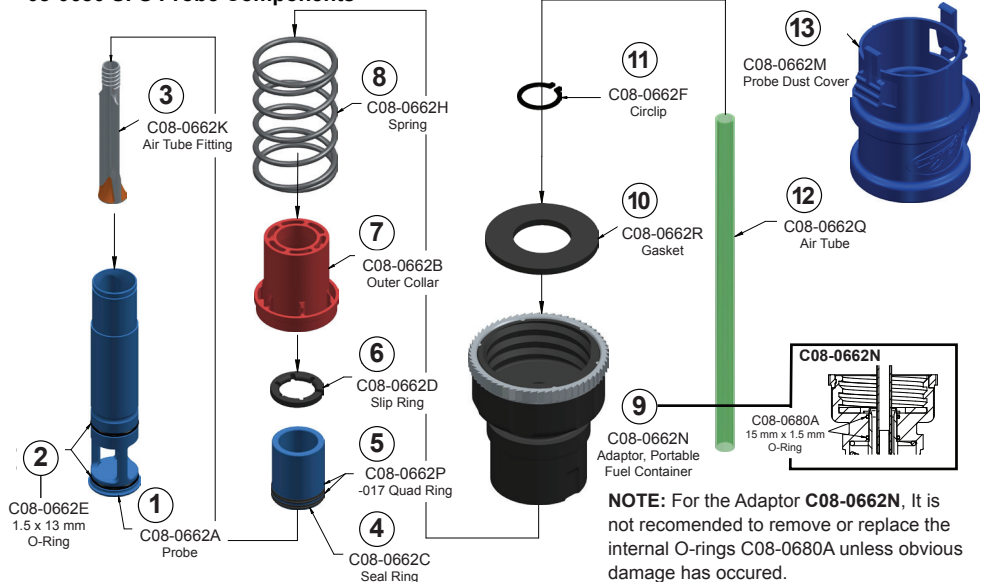


08-0680 Probe Service Assembly

1. Review components and reassemble the Probe in reverse order of disassembly. **Lubricate all o-rings with a light coat of seal grease. Lubricate the two internal o-rings located inside of the C08-0662N Adaptor.** 2-stroke oil or bar oil can be used if seal grease is not available. Make sure the circlip is fully seated in its groove after assembly. Reattach Probe air tube by screwing it (clockwise direction) onto air tube fitting. Replace air tube if loose and does not tighten on the air tube fitting.



08-0680 SFS Probe Components



Probe Maintenance

WARNING: To avoid injury, you must follow these procedures to remove SFS Probe from portable fuel container. If the container is completely empty then it is ok to remove the Probe.

08-0713 - Soter Probe Service Tool - This tool allows you to easily service and inspect the Soter Probe in the field without the need for disassembly.

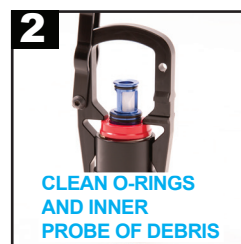
1. Place the tool on the top of the probe as shown in the photo to the right and press down firmly and squarely until the lower tabs latch under the Probe.



Required item:
08-0713 - Soter Probe Service Tool



2. Pivot the two arms up while leaving the tool in place to expose the O-rings on the Probe. Carefully inspect the O-rings for damage and replace if not in serviceable condition. Remove any debris using compressed air or a clean rag. Lubricate the O-rings using some 2-stroke premix oil or WD-40.



3. Remove the tool by pulling it to the side as shown. The Probe should fully close. Test the Probe with a receiver in a safe environment to ensure smooth and leak-free function.

WARRANTY: Soter Fueling System™ Warranty and Disclaimer

COMPATIBLE PORTABLE FUEL CONTAINERS, AS DEFINED IN THESE INSTRUCTIONS, EQUIPPED WITH THE SOTER FUEL SYSTEM™ PROBE COMPLY WITH CARB EMISSION REGULATIONS FOR PORTABLE FUEL CONTAINERS (13 CCR 2467 ET SEQ.).

Motion Pro, Inc. warrants that compatible portable fuel container system equipped with the Soter Fuel System™ Probe is free from defects in materials and workmanship that cause such systems to fail to conform with each of the requirements specified in this procedure for a period of one year from date of sale. Motion Pro, Inc. also warrants that all the components of the Soter Fueling System™ are free from defects in materials and workmanship for a period of one year from date of sale.

Call Motion Pro warranty department at 650-594-9600 to get an RGA number before returning product. Send product back to Motion Pro Warranty Department, 3171 Swetzer Rd, Loomis, CA 95650 for inspection with RGA number clearly noted on outside of box or in letter inside box. Include note with product clearly stating claimed defect, proof of purchase, and your contact information. Motion Pro reserves the right to inspect and determine if a product is defective and that product was not subject to misuse. Consumers outside of the USA must contact the store where they purchased the product from to obtain warranty return and service directions for their country and location. Above is the customer's exclusive remedy.

The above is expressly in lieu of all other warranties express or implied and of all other obligations or liabilities. In no event shall Motion Pro, Inc. be liable for any incidental or consequential damages arising from the breach of any warranties, improper use, the failure to deliver, delay in delivery, delivery of non-conforming parts or any other breach of contract or duty.

Visit motionpro.com/c/soter-fueling-system for more information