



INSTRUCTION MANUAL

For 08-0718

Soter Fueling System™ Receiver

Motion Pro Soter Fueling System™

The Motion Pro Soter Fueling System™ requires correct installation of the components for safe use and function. This manual will identify the steps needed for installation and use of the 08-0718 SFS Receiver. For more information about installing or servicing the Soter Fueling System™ please see the full manual provided with each component.

motionpro.com/c/soter-fueling-system



Soter Fueling System™

U.S. Patent 10,618,797 | U.S. Patent 10,259,700

SFS RECEIVERS:

08-0718 SFS Receiver



SFS PROBES:

Note: Refer to manual included with 08-0680, 08-0662, and 08-0738 SFS Probes for instructions on use, installation, servicing of SFS Probes.

08-0680 SFS Probe
*not included



Scepter: FR1G101 (1 gallon)
FR1G201 (2 gallon)
FR1G501 (5 gallon)

08-0662 SFS Probe
*not included



08-0738 SFS Probe
*not included



SERVICE TOOLS:



Bar tool (scrench)
*not included



08-0713 Soter Probe
Service tool *not included

COMPATIBILITY:

Chain Saw Models, Fitment:

08-0718 Receiver – Replaces threaded cap on Husqvarna® 353, 357, 390, 395, 455, 61

RESOURCES:

Access documents and video resources online:
visit motionpro.com/c/soter-fueling-system for more information



Use smartphone camera to scan

WARNING: Please carefully read all instructions for the installation and use of the SFS Receiver before installing or using. Improper installation or use of this product could result in property damage, harm to others, great bodily injury or death. Do not depress plunger on an SFS Receiver installed on a gas tank without use of SFS Probe. Doing so could result in geysering (spraying out) of gasoline and could result in property damage, fire, severe burns, harm to others, great bodily injury or death. **WEAR SAFETY GLASSES AT ALL TIMES WHEN USING, INSTALLING, OR REMOVING THIS PRODUCT.**

TABLE OF CONTENTS

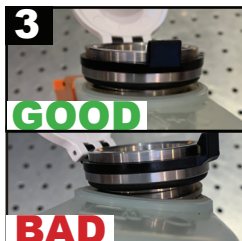
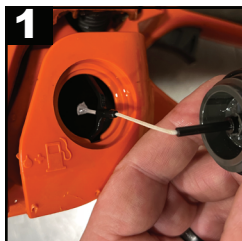
SECTION	PAGES
Step 1: Receiver Installation – 08-0718 Receiver	Pg. 4
Step 2: Locking And Unlocking Procedures – 08-0718 Receiver	Pg. 5-6
Step 3: Fuel Transfer – Soter Fueling System™ Probe Installed	Pg. 7
Step 4: Receiver Removal – Soter Fueling System™	Pg. 8
Service: Receiver – 08-0718 Receiver	Pg. 9-11
Warranty and Disclaimer: Warnings before use	Pg. 12

STEP 1: Receiver Installation

08-0718 Installation



1. Remove stock cap and clean sealing surface of fuel tank.
2. Insert SFS Receiver into tank, ensure proper alignment of the threads.
3. **IMPORTANT: DO NOT CROSS-THREAD.**
4. Fasten using the large hex end of the bar tool.

IMPORTANT: Do not misalign or cross-thread receiver during installation DAMAGE OR INJURY MAY OCCUR IF THE COMPONENT IS NOT FULLY INSTALLED.



STEP 2: Locking And Unlocking Procedures 08-0718 Receiver

1. The dust cover on the Receiver protects from impact and debris, but additionally includes an integrated locking mechanism for the Receiver.

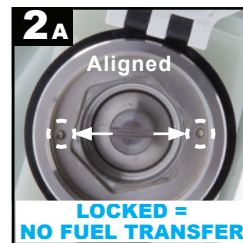
ROTATE CLOCKWISE TO LOCK  AND COUNTERCLOCKWISE TO UNLOCK  RECEIVER.


LOCKED POSITION

- 2a. Alignment indicators and plunger slot shown in alignment. This signifies that the Receiver is **LOCKED** and cannot be used for an SFS fuel transfer until it is returned to the unlock position.

UnLOCKED POSITION

- 2b. Alignment indicators are located on the interior of the Receiver. The plunger (center) slot is **NOT** aligned with the indicator marks, signifying that the Receiver is **UNLOCKED** and ready for fuel transfer using an SFS Probe.



Step 2 continued, next page... 

STEP 2:

Locking And Unlocking Procedures 08-0718 Receiver

3. TRADITIONAL REFUELING -

When a SFS Probe is not available for use, the Receiver plunger can be locked in the open position to allow traditional refueling.

WARNING: Do not touch, depress, or attempt to open plunger when receiver is in the unlocked position unless located minimum 100 feet from ignition source, and fuel in the fuel tank is not in a geysering state.

To lock open plunger, slowly and carefully push down unlocked plunger with a bar tool. When the plunger bottoms out, rotate clockwise approximately $\frac{1}{4}$ turn. After traditional refueling, rotate the plunger counter-clockwise approximately $\frac{1}{4}$ turn and allow plunger to release to the closed position under spring pressure.



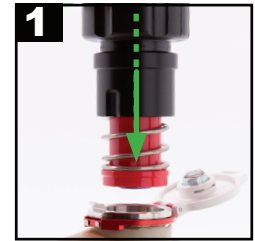
STEP 3:

Fuel Transfer – Probe Installed

WARNING: Wear safety glasses at all times when using, installing, or removing this product.

1. To refuel with Soter Fueling System, unlock Receiver and open/ remove dust covers from both Probe and Receiver. Invert fuel container and place Probe in first step of Receiver, maintaining axial alignment.

2. Firmly and completely push Probe into Receiver while maintaining axial alignment. Complete fill time will be achieved in 20 seconds or less on most chainsaws. After refueling, remove Probe from Receiver and return dust covers to their closed position. The Receiver may be locked as shown on pg. 5, step 2 (Fig2a) but is not required for operation.



STEP 4:

Soter Fueling System™ Removal Instructions

08-0718 Receiver Removal

WARNING: To avoid injury, you must follow these procedures to remove SFS Receiver from chainsaw gas tank:

1. Allow the equipment to sit for 45 minutes away from heat sources to allow the equipment to cool.
2. Take equipment to safe place at least 100 feet from nearest fire, sparks, or other source of ignition.
3. Put on safety glasses.
4. Install SFS Probe in good working condition on portable fuel container and insert into SFS Receiver and hold down for 15 seconds to bleed pressure out of equipment fuel tank.
5. Confirm pressure has been relieved in equipment gas tank as follows: With dust cap on, unlock SFS receiver. Open dust cap. Use screwdriver blade to slowly and gently depress plunger in SFS Receiver a small amount (no more than 2 mm). If fuel comes out withdraw the screwdriver blade and allow receiver to close. Let equipment cool down for longer period of time and try bleeding pressure from gas tank again by inserting SFS Probe attached to portable fuel container. Repeat this process until no fuel comes out of SFS Receiver when plunger is depressed a small amount.

WARNING: Never push down receiver fully without SFS Probe!

6. If SFS Receiver plunger can be depressed a small amount without fuel coming out then it is safe to proceed with removal of the SFS Receiver by using a bar tool or appropriate size hex wrench that fits on inside of SFS Receiver to turn it counter clockwise and unscrew from the Receiver adapter in the fuel tank.

7. Install stock gas cap on equipment gas tank to prevent fuel spills.

SERVICE

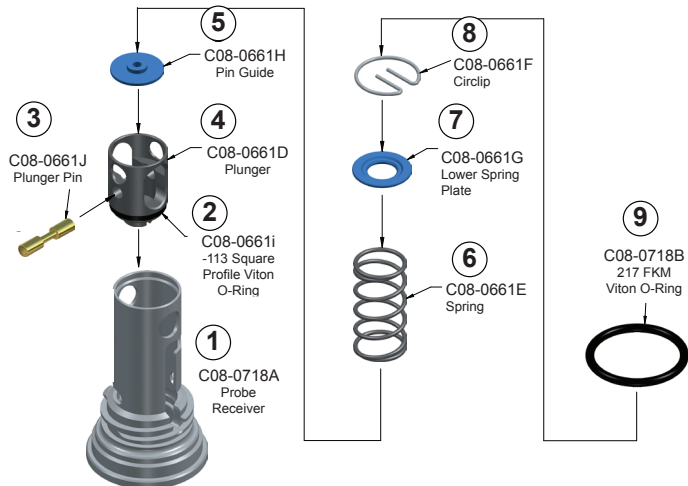
Soter Fueling System™ Receiver

08-0718 Receiver Service

WARNING: Read all direction for servicing; Improper servicing could result in gasoline spill, property damage, great bodily injury or death; improper use could result in great bodily injury or death. Do not manually depress plunger without SFS probe! Doing so could cause gasoline to geyser out of receiver and cause property damage, great bodily injury or death.

WARNING: Wear safety glasses and protective gloves at all times when servicing Soter Fueling System Receiver.

08-0718 SFS Receiver Components



Service continued, next page... ➔

Disassembly

Note: To identify the numbered component references below, see the 08-0718 SFS Receiver Components diagram on pg. 9

1. Remove large o-ring ⑨, inspect for wear or damage.

2. Using the screwdriver end of a bar tool, pry the tabs of the wire clip ⑧ to remove it from the groove in the SFS Receiver. The lower spring plate ⑦, spring ⑥, and pin guide ⑤ may now be removed from the assembly.

3. Remove plunger pin ③ and plunger ④. Clean all parts with contact or brake cleaner and compressed air. Inspect all components for any damage and replace if necessary.



Assembly

Note: To identify the numbered component references below, see the 08-0718 SFS Receiver Components diagram on pg. 9

1. Lubricate square-profile o-ring on plunger ④ with 2-stroke oil. Install plunger into the Receiver ① and align the plunger pin hole with the slot as shown. Install the plunger pin ③ and pin guide ⑤. Make sure the pin guide is engaged with the undercut in the center of the plunger pin. This feature keeps the plunger pin in proper alignment during use.

2. Install the spring ⑥ and lower spring plate ⑦. **Note:** the smaller diameter shoulder goes against the bottom of the spring.

3. Compress the spring with your finger and install the wire clip ⑧. Make sure the wire clip is fully seated in the lower groove on the Receiver.



Motion Pro Soter Fueling System™ Warranty

WARRANTY:

Motion Pro, Inc. warrants that all the components of the Soter Fueling System are free from defects in materials and workmanship for a period of one year from date of sale. Call Motion Pro warranty department at 650-594-9600 to get an RGA number before returning product. Send product back to Motion Pro Warranty Department, 3171 Swetzer Rd, Loomis, CA 95650 for inspection with RGA number clearly noted on outside of box or in letter inside box. Include note with product clearly stating claimed defect, proof of purchase, and your contact information. Motion Pro reserves the right to inspect and determine if a product is defective and that product was not subject to misuse. Consumers outside of the USA must contact the store where they purchased the product from to obtain warranty return and service directions for their country and location. Above is the customer’s exclusive remedy.

The above is expressly in lieu of all other warranties express or implied and of all other obligations or liabilities. In no event shall Motion Pro, Inc. be liable for any incidental or consequential damages arising from the breach of any warranties, improper use, the failure to deliver, delay in delivery, delivery of non-conforming parts or any other breach of contract or duty.

Soter Fueling System™ Field Notes

Soter Fueling System™ Field Notes

Soter Fueling System™ Field Notes

I08-0718A



Visit motionpro.com/c/soter-fueling-system for more information

Soter Fueling System™
U.S. Patent 10,618,797 | U.S. Patent 10,259,700

08/2022